

# LITTLE HADHAM

P A R I S H   N E W S

MAY 2026

Your local free magazine printed & distributed by St Cecilia's Church





## LETTER FROM

# The Rectory

### EVERYTHING WE HAVE . . . (PART 1: THE TENANT)

We often speak of what we “own” - our homes, our income, our time, even our lives. It feels natural. We have worked hard, made sacrifices, and built what we have.

But there is a question worth pausing over: If we truly own our lives, why can we not decide how long we live? Why can we not extend our years or choose our final day?

That alone tells us something important: our control is limited.

Life is not something we created, nor something we can ultimately command. And if that is true of life, could it also be true of everything else? Perhaps we are less like owners and more like tenants. A tenant may live in a house, care for it, even invest in it but they know it is not ultimately theirs. It has been entrusted to them for a time.

So, it is with us. Our abilities, our opportunities, the families we were born into, the circumstances we began with, even the strength we use each day — these were not of our choosing. We received them.

- We did not choose the beginning of our lives
- We did not choose our families
- We did not choose the circumstances into which we first arrived

We make choices as life unfolds, but none of us chose where the story began.

Some begin life in places of conflict and struggle — and how they wish it were otherwise.

Others begin with safety and provision — and at times, may take this for granted.

These are two very different beginnings, yet neither is a matter of choice.

That difference is not something we earned. It is something we have received. Call it what you will, but those of faith recognise it as grace.

When we begin to see life this way, something changes. Gratitude begins to grow — not forced, but steady and real. An acceptance that: I am here because something has been given to me. And that leads to deeper questions:

- What am I doing with what I have been given?
- Who can I help with what I have received? Have I stopped to give thanks?

A grateful heart is where a loving and caring life begins.

Because every tenant must have a landlord... (Part 2 next)

A grateful tenant in God's care,

*Revd Tayo Wale-Falope*

revdtayo@falope.com

## LITTLE HADHAM PARISH NEWS

### PRIEST IN CHARGE:

REVD IBITAYO (TAYO) WALE-FALOPE

### ADMINISTRATOR TO THE RECTOR:

01279 842 609  
muchhadhamrectory@gmail.com

### CHURCHWARDEN:

KARIN GREEN  
01279 771 532  
churchwardenstcecilias@gmail.com

### EDITOR:

ANNE WRIGHT  
littlehadhampn@gmail.com

To find out more about the life of our Church, please visit our website:

[www.riverashchurches.org.uk](http://www.riverashchurches.org.uk)

### EDITORIAL DEADLINE

All articles for inclusion and payment for advertising in the next issue **must** be received by the **15th** of the month.

(BACS preferred, email the editor for details.)

Editor reserves the right to edit copy received, and add or omit pictures where necessary.

View the Parish News Online including back issues:

[www.littlehadham-pc.gov.uk/parish\\_news.html](http://www.littlehadham-pc.gov.uk/parish_news.html)



### FROM THE REGISTERS OF ST. CECILIA'S CHURCH

We commend to God's care Bruce Stephen Taylor (71) formally of The Smithy, Little Hadham whose Ash Burial took place on Saturday 28th March at St. Cecilia's Church.

## ADVERTISING ENQUIRIES

If you would like to advertise in our magazine, please contact the editor at: **littlehadhampn@gmail.com** for more details.

The Parish News is funded and distributed freely by St Cecilia's Church. We really appreciate the support of all our advertisers to help cover our overheads and keep the Parish News in print. Please support them and shop local.

So if you run a business or service and would like to invest in your local magazine and reach over 500 homes each month with your product or service, we'd love to hear from you.

We offer ads at 4 different sizes and prices from a full page to an eighth of a page, with discounts for taking a year at a time. We can also insert flyers for a small fee.

You can also offer support by making a donation to the magazine, contact the editor for details.

The magazine is written by many contributors who report for themselves or for a club or organisation they represent. The church and production team does not necessarily agree with the opinions aired in any article printed here.

# HOW WELL DO YOU KNOW YOUR CHURCH?

HELEN WALKER

This month we are looking at Guy Bury, the youngest son of James and Frances who was born in the Rectory at Little Hadham in 1883 and is also remembered alongside his parents in the Chancel of St. Cecilians.

Research of the 1901 census shows Guy aged 17 as a boarder at the Forest School in Walthamstow, following which he studied at Lincoln College, Oxford. In 1908, Guy was ordained as a Deacon in Oxford Cathedral by the Lord Bishop of Oxford, no doubt intending to follow in his father's and grandfather's footsteps. The following year he was ordained as a priest, also in Oxford Cathedral, and worked as Assistant Priest in the parish of Christchurch in Reading from December 1908 until December 1910. He appears to have been an accomplished cricketer and rugby player, no doubt founded in his school days. Guy is also remembered in Christchurch, Reading with a memorial from the parishioners who knew him.

On 16 January 1911, Guy set sail on the P&O ship SS India for a new life as a missionary with the Melanesian Mission and the letters he sent home during his travels to the other side of the world can be found in the National Library of Australia. The letters tell of the excitement of this young man setting out on a life-changing adventure, thousands of miles away from his family and all that was familiar.

He arrived in Sydney on 23 February 1911 and travelled on to Norfolk Island in the South Pacific arriving on 7 March 1911. Guy's final destination was the Santa Cruz Islands, approximately 250 miles southeast of the Solomon Islands archipelago and just to the north of Vanuatu.

Guy reported that he loved Sydney and thought it was one of the most beautiful cities of the world!

He reached Vanikoru – the first of the Santa Cruz Islands – on 28 April 1911.

In his letters, Guy paints a colourful picture of the local life and culture which must have been so strikingly different from the Victorian family life he had experienced in Little Hadham.

In the months that followed, Guy travelled across many of the islands doing the work of the Mission, sending his last letter home on 13 July 1911, in which he declares an interest in what has been happening in Europe, having heard nothing since the result of the boat race – Oxford won!

Guy frequently refers in his letters to mosquito bites and sores and it appears that he developed an infection and died of sepsis on 23 August 1911, less than six months after arriving at the Mission.

Guy was buried by his friend and fellow missionary John Walcot Blencowe in a small cemetery beside the church in Nabaniala, Te Motu, which he considered 'home' and where he was well received by the people. For anyone who is interested in reading his letters, you can find them online using the link below:

<https://nla.gov.au/nla.obj-874351843/view>



# LITTLE HADHAM GARDENING CLUB

ANNE WILLETT

Our next event is our annual **Plant Sale and Coffee Morning on Saturday 9th May at 9.30am.**

Please bring any unwanted plants or garden bric-a-brac along just before 9.30am and replenish your garden with plants from our knowledgeable garden club members. Stay for coffee and home made cake.

On **Tuesday 19th May** there will be a talk by Brian Shaw on Marks Hall Estate. Doors open at 7:45pm for 8pm start.

## OUTWIT THE SLUGS AND SNAILS

Slugs and snails can wreak havoc in the garden demolishing seedlings and decimating the leaves of larger plants such as hostas. While slug pellets are an effective deterrent, those containing metaldehyde can harm hedgehogs and other wildlife, and other forms of slug controls can be time consuming and are not guaranteed to work.

It can be expensive and heartbreaking to keep growing the plants you will know will be eaten completely or ravaged beyond recognition. So why not stop? There are plenty of beautiful plants that slugs are not attracted to. Grow these instead, and not only will your garden be easier to manage, but you will be happier too without the heartache of losing treasured plants to hungry molluscs.

Many plants have developed their own resistance to slugs and other leaf munchers. Some like foxgloves and euphorbias have toxic leaves whilst others like Stachys and Pulmonaria have developed thick course hairy leaves which slugs



*Alliums, Weigela, Fern, Nandina and Acer*

and snails appear not to like. Swollen succulent foliage such as sedums and sempervirens can deter slugs too.

Plants that slugs don't like to eat:-

- Aquilegia
- Penstemon
- Euphorbia
- Cranesbill geranium
- Ajuga reptans
- Foxglove
- Astrantia
- Alchamilla mollis
- Astilbe
- Hellebore
- Lavender
- Campanula
- Heuchera
- Cyclamen
- Fern
- Fuschia
- Hydrangea



## Have Your Say!

Over the past few months, the Neighbourhood Plan Steering Group has been working away in the background, talking about what we all value in the parish and where we need to plan carefully for the years ahead. Now we need to hear from you. Every household in the parish will receive a residents' survey, delivered with this edition of the Parish News.

Please don't leave it on the kitchen table and forget it.

The survey is how you tell us what you love about living here, what worries you, and what you'd like Little Hadham to look and feel like in 10–15 years' time. Do we have the right mix of homes? Are our green spaces and countryside properly protected? Is it easy enough to walk, cycle or get around? What local facilities matter most to you and your family? Your answers will directly influence the priorities and policies in the Neighbourhood Plan.

You can complete the survey in whichever way suits you best:

- Fill in the paper copy that has been delivered to your home and return it.
- Or, if you prefer to do it online, simply scan the QR code on the back of the survey and complete it on your phone, tablet or computer.

It should only take a short time to complete, but it will help to guide decisions that affect Little Hadham for many years to come. Whether you are a long-standing resident or have only recently moved here, retired or juggling work and family life, your voice matters just as much as anyone else's.

A strong response from across the whole parish will give the Neighbourhood Plan real weight when planning decisions are made. A weak response leaves others to decide for us.

So please, find the survey and take a few minutes to fill it in — and encourage your neighbours, friends and family in the parish to do the same. Together, we can make sure the Neighbourhood Plan reflects the Little Hadham we value today and the Little Hadham we want to hand on to the next generation.

To get in touch, please email the neighbourhood plan steering group at: [LH-NP@outlook.com](mailto:LH-NP@outlook.com)

**This is your chance to help shape the future of Little Hadham!**

If it is easier, you can fill in a copy of this form online at:  
<https://forms.cloud.microsoft/r/cEGvGZ3d8a>

Or simply scan this QR Code:



Cammashall  
CELEBRATING 60 YEARS  
**JURASSIC TRAIL**  
26<sup>TH</sup> - 31<sup>ST</sup> MAY 2026  
10 AM TILL 4 PM  
TICKETS THROUGH OUR WEBSITE  
CAMMASHALL.CO.UK

**CHRIS STIGWOOD**

## **BOOKKEEPING SERVICES**

**All Aspects of Bookkeeping and Office Management Undertaken**

VAT Return Submissions  
Monthly Payroll  
Management Accounts  
Experienced with various Accounts Systems  
Self-Employed & flexible

**REFERENCES AVAILABLE**

**07814 096789**

**chrisstigwood@hotmail.com**

# DOWN AT THE DOCTORS

ANDREW WILKINSON, PRACTICE MANAGER

[www.muchhadhamhealthcentre.co.uk](http://www.muchhadhamhealthcentre.co.uk)



I was thinking about what to write for this month's article and, if I am honest, was struggling for inspiration. That was until Monique, our Community Matron, came in to discuss a housebound patient she was concerned about. We reviewed the situation together, involved the GP, and quickly put a plan in place. As a result, we were able to safely manage the patient at home and avoid a hospital admission. It made me reflect on how often this kind of joined-up working happens behind the scenes, and how many patients may not realise the vital role our community colleagues play in their care.

We work very closely with the Hertfordshire Community NHS Trust (HCT) Community Team to support patients who need care at home. This includes those who are housebound, people recently discharged from hospital, and patients who may be nearing the end of life. The team currently supports around 60 patients in our area and is led by our Community Matron, Monique, alongside senior nurses Ciara and Thomson, nurses Carys and Hanneke, and healthcare assistants Linda and Irene.

They are a highly skilled, approachable team who know our patients well and work closely with us at the practice. When needed, they also involve other specialist professionals, such as physiotherapists and occupational therapists, to ensure patients receive the right care at the right time.

Their role is broad and includes providing hands-on nursing care such as wound dressings, injections, catheter care and support with medications. They also help monitor long-term conditions, support recovery following a hospital stay, and play a key role in helping patients remain safely at home wherever

possible. The Community Team also provides a "hospital at home" service, which I will cover in a future article.

Although the Community Team may be the healthcare professionals you see most often at home, your GP remains responsible for your overall medical care. The team keeps us regularly updated and will contact us if there are any concerns or changes in your condition, allowing us to adjust your care promptly when needed. Medications are usually prescribed by the GP, with the Community Team supporting patients in taking them or administering them when appropriate.

They are also an essential part of end-of-life care in the community, providing compassionate support focused on comfort, dignity and respecting patients' wishes. Where appropriate, we can also involve the local hospice to provide additional specialist support. The team works closely with both the practice and families during what can be a very difficult time, helping patients to remain at home if that is their preference.

The team provides care seven days a week, with visit frequency tailored to individual needs. Access to the service is usually arranged through referral by your GP or following a hospital stay.

Their aim, which we share as a practice, is to keep patients safe, comfortable and as independent as possible in their own homes. It is a genuinely collaborative effort, and we are very fortunate to have such a dedicated and friendly team working alongside us. I hope this gives you a helpful insight into how the community team and the practice work together for the benefit of our patients.

Best wishes,

Andrew

## STORTFORD PARK PHYSIOTHERAPY

Based at Wickham Hall CM23 1JG

Contact us for appointments or information

Tel: Diana 07506 693 158

Email: [dianastortpark@gmail.com](mailto:dianastortpark@gmail.com)

Web: [stortfordpark.physio](http://stortfordpark.physio)

**CLEAN CHIMNEYS ARE SAFER CHIMNEYS**

- Chimney Sweeping
- Service & Maintenance
- Bird Guard & Cap fitting
- CCTV Inspections
- Bird Nest Removal

07703 740638

[karl@townandcountrysweeps.com](mailto:karl@townandcountrysweeps.com)  
[www.townandcountrysweeps.com](http://www.townandcountrysweeps.com)

BOOK YOUR 1ST CLASS FOR £5

YOU TIME!

Come and join us for a Reformer Pilates, Yoga, or Barre class. At our beautiful studio at Wickham Hall, Bishop's Stortford.

Call/Book online  
[www.akashawellness.co.uk](http://www.akashawellness.co.uk)  
01279 757633



POWER YOGA  
SLOW FLOW  
YIN YOGA  
for all levels

flow balance energize

INFO & BOOKING

[www.janeroseyoga.com](http://www.janeroseyoga.com)  
@janeroseyoga  
07860 929379  
RoseYoga Studio, Stortford Road, Standon, Herts, SG11 1ND

## CHLOÉ BURROUGHS REFLEXOLOGY



Relaxing and Rebalancing Reflexology Treatments  
Advanced Facial Reflexology

[www.chloeburroughsreflexology.com](http://www.chloeburroughsreflexology.com)

Phone: 07863346212

Email:

[Info@chloeburroughsreflexology.com](mailto:Info@chloeburroughsreflexology.com)

Treatment Room in Little Hadham

Come and experience the power of reflexology



Little Hadham Parish Council meets the first Tuesday of each month in the Village Hall. There is no meeting in August or January. All residents and press are welcome to attend the meetings.

### MEETING DATES – ALL MEETINGS COMMENCE AT 7.30PM

		5 May	2 Jun	7 Jul	1 Sep	6 Oct	3 Nov	1 Dec
--	--	-------	-------	-------	-------	-------	-------	-------

Agendas are posted on noticeboards and the Little Hadham Parish Council website.

### ANNUAL MEETING OF THE PARISH COUNCIL / ANNUAL PARISH MEETING 5TH MAY – 7.30PM IN THE VILLAGE HALL.

Come along and hear what the Parish Council and other local community groups have been doing over the last year. Your Parish Council is important and ensures the village has a voice. Without the Parish Council we will not have a say in how our village is run, in particular Highways and Planning issues will not get the current attention the Parish Council give to them with East Herts.

There will be a short Parish Council meeting, followed by the presentations from the community groups, with wine and refreshments for all.

The Summer Fayre is well on track. You can book your tickets on the Little Hadham Plans for the Summer Fayre are well underway, but we still need more volunteers to help the event be the success it should be on the day. Please contact [clerk@littlehadham-pc.gov.uk](mailto:clerk@littlehadham-pc.gov.uk)

### LETTER FROM CHRIS HINCHLIFF MP

Dear Parish Council Clerk,

*I am writing to highlight an important opportunity that I believe may be of significant interest to your parish.*



*The UK Government's Local Power Plan, delivered through Great British Energy (GBE), is aiming to support more than 1,000 local and community energy initiatives by offering funding, expert advice, and tools to help projects grow and succeed. The programme is backed by up to £1 billion to expand clean, community led energy across the country.*

*It has been little short of a tragedy that the transition to renewable energy in this country has until now been so dependent*

*on a developer-led model where the projects that come forward are primarily defined by what is most convenient and most profitable for private companies.*

*I know that across Northeast Hertfordshire the reality of this has often been inappropriate schemes that feel as if they are imposed on rural communities without their input. In parish meetings across my constituency, I have heard time and again that residents support switching to low-carbon domestically produced electricity but oppose a system that gives them little agency and often feels like it is threatening to industrialise swathes of much-loved countryside.*

*This has never been the right way to do renewable energy well, and I am very pleased that with this funding for community energy projects, alongside mandatory rooftop solar for new builds and investment in retrofitting projects for public buildings, the Government is finally charting an alternative approach.*

*I recognise that not every parish may currently be able to develop its own community energy scheme, but projects such as these are a very real opportunity to put local residents back in the driving seat, identifying the best sites, scale, and technologies for your local landscape, as well as ensuring that you collectively benefit from the profits.*

*GBE is currently inviting community organisations to express interest in potential projects. You are welcome to put forward ideas at any stage of development, and whether your group might consider renewable generation, battery storage, energy efficiency initiatives, or shared ownership schemes, GBE is keen to hear from you.*

*By completing an Expression of Interest (EOI), you can outline your project idea, indicate what kind of support you might need, and contribute to a national picture of community energy ambitions.*

*If your parish is interested in exploring this opportunity, I would encourage you to visit the Local Power Plan webpage ([gbe.gov.uk/local-power-plan](http://gbe.gov.uk/local-power-plan)) and consider completing the Expression of Interest form ([gbe.gov.uk/express-your-interest](http://gbe.gov.uk/express-your-interest)).*

*I am very happy to talk to any parish group in Northeast Hertfordshire about this and to offer my formal support for projects you wish to seek funding for. This could be the first step toward shaping a project that strengthens local resilience and contributes to a cleaner, fairer energy system.*

*Yours sincerely,*

*Chris Hinchliff*



### LITTLE HADHAM PARISH COUNCIL – JOIN VIA ZOOM

Join your Parish Council meeting via zoom. Give you a chance to see what is happening in the village without leaving your front room. You only need to click on the QR code. Register for the meeting and you will be welcomed to the meeting. You can choose to be anonymous and not turn on your camera.

### INFORMATION FROM THE PARISH COUNCIL MEETING

Our County Councillor Mark Pope has advised that the resurfacing work to The Ford, near to the Hadham lights, is scheduled to be carried out in late June of this year and will keep us posted with regard to developments.

Also, that the blocked drain in Chapel Lane is on a list to be manually dug out. But at this time we don't have a timeframe for when this will be done.

Highways – The two Speed Indicator Devices (SIDs) provided by a grant from the Police and Police commission have come to the end of the maintenance period and a new agreement needs to be paid for. This is £2,000. Cllr Pope has agreed to make this payment on behalf of the Parish Council. For which Little Hadham Parish Council would like to thank him for his continued support.

The pavement by the garage will be resurfaced in this financial year. Work on the verge by the garage is also going to be repaired and bollards installed to deter parking. An officer from East Herts visited the garage and advised the owner not to park any vehicles on the pavement or verge.

The speed and traffic survey equipment on Albury Road and the A120 is part of the traffic calming measures. In East Herts Highways, Mark Wilcox has taken over from Paul Rogers.

Several residents asked about the state of the road by the traffic lights. Cllr Pope answered that this comes up at the meetings with Herts County Council and the Parish Council. It is suggested that it will be done this financial year. This is a high priority work.

### **DO YOU WANT TO BECOME A PARISH COUNCILLOR?**

As the parish council is the first tier of local government, representing residents' needs you can make a difference. Ensuring local voices are heard on planning, development, and services. Reviewing planning applications and commenting on them to the principal local authority, influencing development. Driving local projects, supporting

community groups, and addressing issues like litter, safety, and transport.

Financial Management: Deciding how to set the precept and spend public money for the benefit of the community, ensuring value for money.

We have a vacancy and would love to hear from you, if you'd like to hear more about the role. Contact the clerk on: [clerk@littlehadham-pc.gov.uk](mailto:clerk@littlehadham-pc.gov.uk)

Little Hadham Parish Council Website - <https://littlehadham-pc.gov.uk/>  
We now have a new PC website and would ask for any ideas as to content.

### **ALLOTMENTS**

We have 2 vacant allotments. If you wish to take on a wonderful project for the new year, please contact: [clerk@littlehadhamparishcouncil-pc.gov.uk](mailto:clerk@littlehadhamparishcouncil-pc.gov.uk)

### **LITTLE HADHAM COMMUNITY GROUP – FACEBOOK PAGE**

The group is for residents to share information about the village: roads closed, trees down, events in the village, etc. This is our Facebook page and is about our village and what is going on.

### **LITTLE HADHAM RAMBLERS**

Our walks are scheduled for:

#### **Wednesday 6th May**

3rd June

1st July

We start from the Village Hall at 10, with a return between 11.30-12. There is a lunch available at the village hall. Always a delicious choice of soup, filled jacket potato or a main meal. A suggested donation of £5 for a beautiful lunch in a very social environment. Dogs welcome.



**100 YEARS**  
**WOOD BROS**  
ENGLAND 1924

**20% OFF**  
with this advert

**UPHOLSTERY | CABINET | FABRIC | ACCESSORIES**

Come and visit our Ware showroom to see a huge range of our bestselling cabinet and upholstery

**Old Charm**      **Harris Tweed**

Choose from a wide selection of upholstery designs in tweeds, velvets, leathers and more...

**Online woodbros.co.uk**      **Showroom in Ware**

Marsh Lane, London Road, Ware, Hertfordshire, SG12 9QH  
01920 469241      Terms and Conditions see instore for details



FLOORING



GARDEN FURNITURE

OTHER PRODUCTS TOO! JUST ASK



DECKING



RENOVATION SERVICE

OVER 25 YEARS OF QUALITY SERVICE

[andrewbanks.co.uk](http://andrewbanks.co.uk)

01279 626389

### Friendly, Trusted, Reliable **Local Handyman Services**

All types of property maintenance work considered.

Plumbing, General Building, Carpentry, Decorating, Minor Electrics, Gardening

Enhanced DBS Vetted

**Call Mark: 07449 056 823**

Email: [HandyMarkMan@gmail.com](mailto:HandyMarkMan@gmail.com)

## **Pesteco**

Fast, effective pest control

If you have a pest problem we have the solution!

*Don't delay - Call us today*

**01279 842 881 | 07773 252 000**



## **N & J Westwood** BUILDING SERVICES

[www.nandjwestwood.co.uk](http://www.nandjwestwood.co.uk)

- Barn & Garage Conversions
- Renovations & Extensions
- Brickwork & Plastering
- Fencing & Patios



For a free quote and advice please contact John  
07886 509 722 | [info@nandjwestwood.co.uk](mailto:info@nandjwestwood.co.uk)

## **TRACEY'S** *Travel*

Four-Seater Estate for all occasions  
Pre-Booked only

*For a reliable, personal service*

Office: **01279 843344** Mobile: **07966 392444**

Much Hadham Based

Visit our Bishop's Stortford showroom with a huge selection of sofas, chairs, sofasbeds and recliners

# **Easy Chair & Sofa Co**

*The South East's Largest Sofa and Chair Retailer*



Talk to the experts - our personal service, attention to detail and 40 years of experience set us apart from the rest

34 Twyford Business Centre, London Road, Bishop's Stortford, CM23 3YT. T: 01279 465863

[www.easychaircompany.co.uk](http://www.easychaircompany.co.uk)

## **HERTFORD** TV SERVICE

Please call: **01992 552955**

- AERIALS & SATELLITE INSTALLATIONS/REPAIRS
- TV REPAIRS (OLED, LCD, LED)
- TV WALL MOUNTING & SOUNDBARS
- WIFI SYSTEMS & DATA NETWORKING
- CCTV & WIRELESS BURGLAR ALARM SYSTEMS
- STARLINK INSTALLATIONS

[www.hertfordtvservice.co.uk](http://www.hertfordtvservice.co.uk)

Unit 1B, Foxholes Avenue, Hertford SG13 7JG  
LOCAL FAMILY BUSINESS EST 1979  
ALL WORK FULLY GUARANTEED

## **The Costume** *Workshop*

costume hire  
hand-made originals  
for

**Fancy Dress Parties**  
**Amateur Dramatics**

**Pantomime**  
and specialising in  
**Period costumes for**  
**adults and children to**  
**wear on educational**  
**trips and in history**  
**lessons**

open by arrangement

**01279 771223, 07973 899497**  
Home Farm Chapel Lane Little Hadham  
[www.thecostumeworkshop.co.uk](http://www.thecostumeworkshop.co.uk)

# MILLENNIUM WOOD

RACHEL SEIFERT [rachel.seifert@gmail.com](mailto:rachel.seifert@gmail.com)

What a difference a few weeks makes! The spring has really sprung up in the woods now that the sun is out. Our winter work party unfortunately had to be cancelled due to the intense rain we had earlier this year, and we are now mostly leaving the forest to its natural habitat for the wildlife over the spring and summer.

The various trees are all coming out into leaf - a great mix of species including silver birch, beech, lime, oak, ash hawthorn, and apple. They are bringing the wood back to life, and creating a dappled sunlit floor where wild flowers are thriving, which in turn are bringing the butterflies and other pollinators.

Stinging nettles, although too many seen as a nuisance, are a very important habitat and food source for a number of species, including the Peacock and Red Admiral butterflies which I haven't spotted yet but hopefully are to come as the weather gets warmer. Garlic mustard, also known as 'Jack-by-the-hedge' is crucial for the Orange-tip butterfly, many of which are flying about in the clearings and can be spotted by their distinctive orange-tips on their wings.

The celandine is out in full sunny-yellow, welcoming visitors at the entrance to the wood. A number of the wild flowers that we planted last year are around, including Primroses, Bluebells, and a few Snakes-head fritillary. And there is a buzz of excitement in the air from the bees and hoverflies. There are also a few Brimstone butterflies

making an appearance with their pale yellow wings which make an incredible leaflike appearance when closed.

The birds are chirping up now the weather is warmer, making their presence known. The chiffchaff, heralding in the Spring, calling as its names suggests a two-tone 'chiff-chaff'. Robins, wrens, blue tits and great tits are all busying themselves, flitting in and out of the trees. A pair of jays screeching across the wood. And a blackcap singing its heart out by the lake confirming that Spring really is in full swing!



For all your gardening requirements  
Call CJ Gardening 07713 790545

For a reliable, conscientious and trustworthy service. Choice of male or female gardeners. Customer recommendations available.

Pruning - Planting - Weeding - Fencing - Jet washing - Seasonal tidy ups

Call Johnny on 07713 790545 for a friendly chat about your requirements.



**DQR**  
Wills & Probate

**TRUSTED  
STANDON BASED  
WILL WRITER**



- ◆ Will Writing & Trusts
- ◆ Lasting Power of Attorneys (LPA's)
- ◆ Probate Administration
- ◆ Inheritance Tax and Estate Planning

**Providing a professional, friendly service, I offer free advice and will guide you through your options.**

Member of The Society of Will Writers



[www.dqrwillsandprobate.co.uk](http://www.dqrwillsandprobate.co.uk)  
01920 747208 | [emma@dqrwillsandprobate.co.uk](mailto:emma@dqrwillsandprobate.co.uk)  
See my recent reviews on Facebook: @dqrwillsprobate



# CAMPANOLOGIST CHRONICLES

hadham.bells@gmail.com

www.riverashchurches.org.uk/river-ash-churches-bellringers

## QUASI HAS BEEN TO A BELLRINGERS QUIZ NIGHT IN ALBURY

How many marzipan balls are there on top of a Simnel cake? Who produced the first chocolate Easter egg? These were just a couple of questions to be answered at the annual Bell Ringer's Quiz night on Saturday 28th March at Albury Village Hall. Hosted by quiz master Peter Hopkins, over 60 people organised into eight teams from around the area contested first prize in this year's competition.

There were six rounds of questions on subjects that included 19th Century History, Countries using the Dollar as their chosen currency name, Easter Food, Human Anatomy and the usual pictures and music categories. In the music category there was a 'Bell Ringing' hint or clue in each answer which tested the ingenuity of those present.

The eventual winners, 'The Stortford Organisers', won by just a half a point from team 'Stanley Thordon', but it was an extremely close run event with

just three and half points separating first from last. Our team, the 'Much Hadham Cavaliers', led the field after two rounds but fell away badly to finish second from last - the trivia Easter Food questions proving to be our downfall!

There were some contentious moments with each team's answers being marked by another, but fun and good humour prevailed to make it an enjoyable evening for all attending. The evening was well organised with a half time interval meal arriving on time and the event closed with a well supported raffle.

It was good to see all the participants helping to clear up afterwards. With beer and wine flowing on each table, the evening had a great jovial atmosphere and was judged to be a total success by all present.

*Quasi*

Find out more about Bellringing by scanning the QR code here with your mobile phone camera. or email us on: [hadham.bells@gmail.com](mailto:hadham.bells@gmail.com)



Promoting Independence. Lessening Isolation.

- Local team supporting elderly people
- Companionship in your home
- Practical help with day to day living
- Personal, tailored and flexible support

Carolyn Westlake 07827 331 987



We also have mobile fridge and freezer units available for hire. Tel: 01279 504638 [www.chillermatic.com](http://www.chillermatic.com) Email: [info@chillermatic.com](mailto:info@chillermatic.com)



## ZEN GARDEN RETREAT



Massage Therapist - Bury Green, Little Hadham  
[www.zengardenretreat.co.uk](http://www.zengardenretreat.co.uk) • [info@zengardenretreat.co.uk](mailto:info@zengardenretreat.co.uk)  
Tel: 07303 127262

## Jacks CONTRACTORS

We provide a range of Groundworks & Hard Landscaping services.

- Digger & Operator Hire-
- Foundations & Concrete Bases-
- Drainage Installation & Repairs-
- Site clearance-
- Driveways & Patios-
- Retaining Walls & Fencing-

Please visit [Jackscontractors.co.uk](http://Jackscontractors.co.uk) for more information

01279 597343 07304 049590

[Sales@jackscontractors.co.uk](mailto:Sales@jackscontractors.co.uk)



### Dog Walking & Pet Care Services

- Dog Walking and/or "Pop in and Plays"
- Holiday cover/Sleepovers in your own home
- Fully Insured & DBS Approved
- Canine First Aid Trained

07753 162561

[rachelpoochpals@gmail.com](mailto:rachelpoochpals@gmail.com)

[@rachelpoochpals](https://www.instagram.com/rachelpoochpals)

Est. 2022





## SUNSHINE, SEEDBOMBS AND SMILES: ANOTHER BUSY MONTH AT WOODLAND RANGERS

Woodland Rangers welcomed April with celebration, creativity and plenty of outdoor adventure. We rounded off the spring term with a brilliant Easter Holiday Camp, where children enjoyed scavenger hunts, friendship bracelet making, nature crafts, Easter-themed challenges, team games and delicious campfire cooking. It was a joyful way to end the term while soaking up the early spring sunshine.

April also marked a special milestone — Woodland Rangers' 2nd birthday! We are incredibly grateful for the continued support of our local community and loved celebrating with a woodland anniversary party, complete with cake and plenty of smiles.

With Easter behind us, the summer term has begun full of energy and curiosity. Our Under 5s explored themes such as ladybirds and Earth Day, creating wooden disc ladybirds and heading out on minibeast hunts armed with magnifying glasses. To celebrate Earth Day, we learned about the importance of caring for our planet, including recycling, litter picking and planting. The children made seedbombs to help spread wildflowers, supporting bees and butterflies.

Across the woodland, we have been spotting signs of spring and learning about the nesting birds that share our environment. At Little Hadham Primary after-school club, children made charcoal

NIKKI & LOUISE

[www.woodlandrangers.co.uk](http://www.woodlandrangers.co.uk)

 [woodlandrangersuk](https://www.facebook.com/woodlandrangersuk)

on the fire for sketching and practised fire-lighting skills using flint and steel.

We are now looking ahead to our May Day Bank Holiday family session, where families can bring sausages and marshmallows to cook over the fire. Keep an eye out for May half-term holiday camp dates, coming soon.



Catch up with friends and family in our welcoming 5th Sin Café and indulge in a tempting selection of cakes. Relax and unwind across 120 acres of idyllic countryside. Just five minutes from Bishop's Stortford it's the perfect escape from everyday



## 5TH SIN OPEN TUESDAY - SUNDAY FROM 10AM

Silver Leys Polo Club, Little Hadham SG11 2ED

Please contact Monique with any queries 07948 003492t

### TUESDAY NIGHTS

OPEN TO THE PUBLIC

## 5TH SIN CAFE

@Silver Leys Polo Club Little Hadham, SG11 2ED  
Bookings: 07948003492

JUMPING, CHUKKAS, LIVE MUSIC &  
IRRESISTIBLE FOOD.



*5th SIN is the place to be on a Tuesday evening—soak up the long summer nights with great food, good vibes, and the company of family and friends.*

### SUNDAY ROAST

OPEN TO THE PUBLIC

## 5TH SIN CAFE

@Silver Leys Polo Club Little Hadham, SG11 2ED  
Bookings: 07948003492



*Where guilty pleasures taste amazing—bring your appetite and your friends!*

*A 3 meat roast that's a feast for the senses, with golden roast potatoes and parsnips, charred brussels and minted peas, a rich creamy cauliflower cheese and a fluffy yorkshire pudding to soak up the irresistible home made*



OPEN TO THE PUBLIC

## 5TH SIN CAFE

@Silver Leys Polo Club  
Little Hadham, SG11 2ED  
Bookings: 07948003492

### SATURDAYS @5TH SIN

THE ULTIMATE SOUTH AFRICAN BRAAI EXPERIENCE  
An elegant celebration of fire, flavor, and tradition.  
£25 per head



Embark on a flavor-filled journey to South Africa—where every bite transports you to a land of bold spices, rich traditions, and unforgettable taste.

INDULGE IN ALL THREE MEATS FROM THE GRILL  
SERVED STRAIGHT TO YOUR PLATE

Succulent Prime Rump Steak flame grilled to perfection

Traditional Boerewors an artisanally crafted farm-style South African sausage,

Tender sweet, spicy Marinated Chicken Sosatie Skewers

ON THE SIDE

Help yourself to all three of our luxury salads

Book NOW with Monique :07948 003492  
Please confirm any allergies or dietary requirements at time of booking

# LITTLE HADHAM VILLAGE HALL NEWS

JOAN MCKINLAY

www.littlehadhamvillagehall.com | vice-chair@littlehadhamvillagehall.com

At our AGM on Tuesday 14th April, we elected Mark Hall to role of Chair for our village hall. Mark has been a management trustee for a relatively short time but has proven to be an asset to the committee. Since his involvement, he has played a pivotal role in taking on premises management and supporting the events committee. We are delighted that the committee now has a full complement of five elected members for the year ahead and wish Mark well in his new role as Chair of the Village Hall.

## TRUSTEES RE-ELECTED:

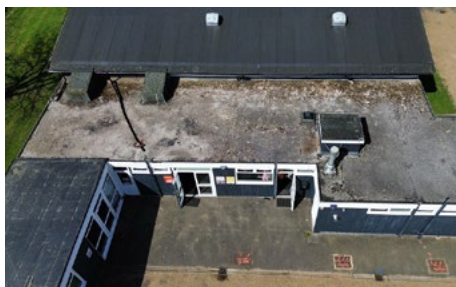
Vice-Chair	Joan McKinlay
Bookings	Denise Armstrong
Treasurer	Alice Dain
Minutes	Kaitee Robinson

Out of a possible nine positions for appointed trustees, five were nominated and appointed from hall user groups in accordance with the Constitution giving a management committee total of ten. If you are interested in joining the management committee as a volunteer, but not associated with a hall user group, please get in touch to discuss how you can get involved.

At the AGM we heard presentations from three speakers; Stuart Izzard from Community Development Action (CDA) who talked about how the CDA supports village halls throughout Hertfordshire, Natalie Kent Chair of Little Hadham Parish Council who talked about the importance and benefits of collaboration between parish council and the village hall and Gail Ellis from Little Hadham Gardening Club, who promoted their upcoming events and invited people to join the group. After the presentations

attendees enjoyed a glass of wine and a selection of nibbles. My sincere thanks to everyone who came along to support the village hall committee and made it such an enjoyable evening.

## PREMISES



We had a costly, but productive 2025, with a new hall floor, soffit boards and upgraded CCTV resulting in a total expenditure of nearly £35k. This year we are having to focus on the condition of the flat roof which covers the Elm room, kitchen, foyer and toilet areas. Quotes as expected, are exceeding the available capital reserves of the village hall. An independent survey will help guide us through the best options to ensure value for money and longevity of the work. In the hope that work can be carried out before next winter, we are actively searching for grant funding. This picture taken in dry weather with the aid of a drone and shows the current condition of the flat roof.



(2025) - Monday 11th May

**RED CHAIR  
COMMUNITY  
CINEMA  
PRESENTS:**

**H is for Hawk**

Drama (Film synopsis on website)  
Cert 12A. Runtime: 1hr 59mins.

- Doors Open 2pm - Film Starts Promptly at 2.30pm
- Entry tickets £5 per person
- Licenced Bar / Ice Creams / Tea & Cake

## FUTURE AFTERNOON FILMS:

**Monday 8th June** – Rental  
Family (2025) Cert 12A.

**Monday 13th July** – Hamnet  
(2025) Cert 12A



## BINGO EVENING – MONDAY 1ST JUNE

As we look forward to the summer evenings, our events

committee are inviting you to book up for a Bingo evening which includes the option for food. They are offering in your ticket price of £12, a jacket potato and choice of filling. Weather permitting, food will be served outside.

Tickets available to book online via the village hall website now. Visit: [www.littlehadhamvillagehall.com](http://www.littlehadhamvillagehall.com) see the main menu for 'What's On' and choice Events from the drop-down menu.

## WELCOME CAFÉ DONATIONS

Our volunteers can serve up to 30 home cooked meals each week, so we know that their hard work and all time they put into preparing and creating delicious meals week after week is valued. Please don't forget to make a cash donation towards the homemade hot meal or the tea/coffee and cakes you have enjoyed before you leave. Your support is always greatly appreciated.

**CHRISTMAS FAIR: SUNDAY 22  
NOVEMBER 2026 & SUMMER  
FAYRE: SATURDAY 18 JULY 2026**



All stalls at both these events are now taken. If you are a stall holder and would like your email address noted for any futures events, please email: [vice-chair@littlehadhamvillagehall.com](mailto:vice-chair@littlehadhamvillagehall.com)

## KEEPING YOU BUSY AND CONNECTED DURING THE WEEK

Details of events held at the hall are available to view on our website along with information on regular activities and fitness groups [www.littlehadhamvillagehall.com](http://www.littlehadhamvillagehall.com).

If you would like to know more about anything in this article please contact Joan McKinlay on: 07789 098 071 or email: [vice-chair@littlehadhamvillagehall.com](mailto:vice-chair@littlehadhamvillagehall.com)



## High quality creative education for children from 3-11

Emphasis on nurturing each child as an individual.

Care provision from 7.45am to 6.00pm including excellent all day nursery.

“ A positive active ethos that strives for excellent personal and academic development. ”

By far the best way to find out about a school is to visit it.

Please phone us on **01279 771285** to make an appointment.

# attend2health

- Chiropractors
- Physiotherapy
- Osteopathy
- Chiropody & Podiatry
- Sports Massage
- Acupuncture
- Hypnotherapy
- Nutritional Therapy
- Yoga, Pilates & Tai Chi
- Counsellors
- EMDR Therapy
- GP Services:

Botox, Skin Tag Removal & Hair Loss Treatments

**£20 OFF**  
YOUR FIRST APPOINTMENT WITH THIS ADVERT\*

**01763 87 80 87**  
[www.attend2health.co.uk](http://www.attend2health.co.uk)  
27 High Street Buntingford SG9 9AB

\*Valid for Chiropractic, Osteopathy and Physiotherapy New Patients only.

*Award-winning Clinic*

LITTLE HADHAM VILLAGE HALL - SG11 2BP

# Summer BINGO NIGHT

**MONDAY 1<sup>st</sup> JUNE 2026**  
DOORS OPEN AT: 7:00PM - FINISH: 9:00PM  
TICKETS £12 - INCLUDES JACKET POTATO  
Weather permitting, food served outside.  
Tickets without food £8  
Queries to: [judithwheeler1@aol.com](mailto:judithwheeler1@aol.com) - M: 07941 509813  
Book online: [www.littlehadhamvillagehall.com](http://www.littlehadhamvillagehall.com)

# Welcome Cafe

## Every Wednesday 10am to 2pm

**Crafting Group & Board Games**

No price list.  
Your donations & awarded grant funding support the community cafe

Lunch available from 12.30pm. Please ask inside.

Closed during August

# WHAT'S ON IN MAY @ LH VILLAGE HALL

## WEEKLY ACTIVITIES

### MONDAY'S

Mum's Matter	10am -11.30am	Drop in: Parents group supported by NHS Midwife.	
--------------	---------------	--	--

### TUESDAY'S

Pilates	9.30am -10.30am	Claire	Email: <a href="mailto:cstacey1412@gmail.com">cstacey1412@gmail.com</a>
Brownies	5.30pm to 7pm	Cassey	Email: <a href="mailto:littlehadhambrownies@gmail.com">littlehadhambrownies@gmail.com</a>

### WEDNESDAY'S

Welcome Cafe	10am - 2pm	Drop in: Coffee & Chat. (Lunch Menu)		<b>DONATIONS</b>
Chair Yoga	11am - 11.45am	Mark Cox	M: 07368 293062	
Tai Chi & Qi Gong	1pm - 2pm	Sarah Baker	M: 07740 701102	
Digital Inclusion	2pm - 3.30pm	Drop in: Help with your digital device		<b>FREE</b>
Fit Steps	6pm - 7pm	Jacqui Howard	M: 07731 454228	
SOMA Sound Bath	7.30pm - 9.30pm	Denise Smith	Email: <a href="mailto:dsreikihealing@gmail.com">dsreikihealing@gmail.com</a>	

### THURSDAY'S

Afternoon Bowls Club	2pm - 4pm	Mike	Email: <a href="mailto:mikebennett12@aol.com">mikebennett12@aol.com</a>	
----------------------	-----------	------	---	--

### FRIDAY'S

Forever Fit	11am - 12pm	Daisy Osborne	M: 07585 309933	
Fancy Feet <i>(Children's Dance)</i>	4pm to 5.30pm	Hannah	Email: <a href="mailto:fancyfeetacademy@hotmail.com">fancyfeetacademy@hotmail.com</a>	
LH Bowls Club	7.30pm - 10pm	Annette Luedtke	Email: <a href="mailto:annetteluedtke@gmail.com">annetteluedtke@gmail.com</a>	

### FORTNIGHTLY

Darts & Games Social	2pm - 4.30pm	Drop in: Tuesday 5 <sup>th</sup> & 19 <sup>th</sup> May		<b>COST: £3</b>
----------------------	--------------	---	--	-----------------

### MONTHLY - Please see website for full details

Community Brunch	10am - 12pm	Book via website: Thursday 14 <sup>th</sup> May	<b>DONATIONS</b>
------------------	-------------	---	------------------

### OTHER

**Thursday 7<sup>th</sup> May - Hall closed for local elections**

**Saturday 9<sup>th</sup> May - LH Gardening Club Plant Sale** – Refreshments available - 9.30am to 11.30am

**Sunday 10<sup>th</sup> May - Little Hadham Antiques Fair** – Entry £1.50. Open from 9.30 pm to 3.30pm

**Monday 11<sup>th</sup> May - Red Chair Community (Afternoon) Cinema:** H is for Hawk 2025) Cert 12A.

Doors Open 2pm. Film Starts Promptly at 2.30pm. Entry £5. Refreshments available to purchase.

See website menu for full details of 'What's On': [www.littlehadhamvillagehall.com](http://www.littlehadhamvillagehall.com)

'Drop in' - just turn up When contact details are listed - please phone / email before attending.

# WESTMILL ART EXHIBITION 2026

ALEX SAVILE

After the resounding success of last year's Westmill Art Exhibition, we're delighted to announce that—by popular demand—it will return once again for its 36th year.

Last year over 65 artists exhibited a total of 350 pieces, with the majority making at least one sale. We're pleased to welcome back many of those artists, along with introducing an exciting number of new exhibitors. The Exhibition continues to showcase both professional and amateur talent, predominantly from the local area. If you're interested in exhibiting your own work, we warmly encourage you to get in touch—please don't hesitate to contact the organisers at [alex@alexphotos.co.uk](mailto:alex@alexphotos.co.uk) or 07768 790 902 for more information.

Blessed with beautiful sunshine, last year's two-day event had an incredible atmosphere, and we're hoping for more of the same this year. Come along not only to enjoy the Exhibition, but also to experience the charm of the village of Westmill. While you're here, you can visit the Westmill Tea Rooms or the Sword Inn Hand pub—perfect additions to a lovely day out.

All funds raised will go towards supporting Westmill Church, helping to meet the significant costs that churches face these days of maintaining their history and beauty, in addition to the general running costs. Beyond that, the Exhibition is a fantastic community event, bringing together volunteers and encouraging local residents to take the exciting step of exhibiting their work for the first time.

Be sure to mark your calendar: **Saturday 30th May & Sunday 31st May**. Join us at St Mary the Virgin Westmill Church,



Helen Day: Summer Flower Meadow



Jennifer Foulds: Puffin Billy

SG9 9LJ to view—and perhaps even purchase—some inspiring artwork.

We look forward to welcoming you!



Laura Blight 2026 RACE



Lynne Lawrence: Anyone for a Martini

**Westmill Art EXHIBITION 2026** **FREE ENTRY**

**Sat 30<sup>th</sup> - Sun 31<sup>st</sup> May**

**10.00am - 5.00 pm**

**ST MARY THE VIRGIN CHURCH, WESTMILL SG9 9LJ**

All proceeds go to Westmill Church

Kindly Sponsored By **Poulton Building Supplies** Landscaping & Garden Materials

**a showcase of art by local artists, for sale at affordable prices**

## ASK US A QUESTION...

www.citizensadviceeastherts.org.uk  
01920 459 944

### I'm becoming more aware of how much energy our household gadgets and appliances use, and it's making me think about our bills. Do you have any tips to help us cut down on energy use and save some money at home?

It's completely normal to worry about rising energy bills. The good news is that adopting a few simple habits into your daily routine can make a real difference. Here are some practical tips to help you take control of your energy use and save money.

#### In the bathroom

Reducing the length of your shower time can help. Try reducing the water temperature of your shower too, as cooler showers use less energy.

#### Doing your washing

Using your washing machine's 'eco' cycle takes longer, but uses less energy. For laundry that isn't heavily soiled, use a cold cycle (20 or 30 degrees Celsius).

If possible, hanging your washing outside is an effective (and free) way to dry clothes - weather permitting! If not, using a heated clothes airer instead of a tumble dryer is a good option as they are cheaper to run.

#### In the kitchen

Air fryers, microwaves and slow cookers usually use less energy than an oven or hob. Putting lids on pans while you're cooking and using the right size pan for

the amount of food you are preparing will use less energy heating it.

When you boil the kettle, measure out the water you need. Boiling water in the kettle before adding to the pan will also help your food cook more quickly meaning you use less energy.

Defrost your fridge or freezer once or twice a year and don't hold the door open for extended periods of time - this will help use less energy to stay cold.

#### Your heating

Check the temperature on the thermostat - between 18 and 21 degrees Celsius is fine for most people.

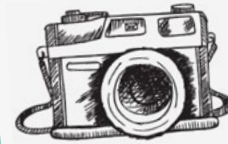
Check your heating times - if you have a boiler, set the temperature two or three degrees lower, (or programme it to be off) when you're out or asleep.

Check the thermostatic radiator valves - some have numbers on them. You can set each one to the lowest number that keeps the room comfortable. Set them to 3 or 4 for rooms you want warmer and 1 or 2 for rooms you want cooler.

Install radiator reflectors behind radiators on external walls if your house isn't well insulated. These are easy to install even in rented homes, and will make rooms feel warmer.

You can find out more about energy saving tips here. If you're worried about paying your energy bills you can get advice on our website or contact Citizens Advice East Herts on 01920 459 944.

## Notices



### COVER PHOTOS

Calling all budding photographers! We are always on the look out for lovely photographs of the village for our front cover. With our new design, it no longer matters if there is a space at the top to put writing over, just something that works with the dimensions we use on our cover which is almost square.

Seasonal photos or photos of events from the village always welcome. Please send them to the editor at: [littlehadhampn@gmail.com](mailto:littlehadhampn@gmail.com)



### The Tudor Storyteller & Family Challenge Trail

May 30th from 11am

No need to book, just turn up!

Free event at Much Hadham Forge Museum SG10 6BS

#HadhamMurals450

### If you or someone close to you is dying, you can talk to us

We know that facing the end of life can leave you feeling isolated and alone. The Anne Robson Trust helpline volunteers are here to listen and support you.

Call us on  
0808 801 0688

We're here for you, if you or a loved one are facing the end of life at home, in a hospital, care home or hospice.

To find out more, please visit  
[www.annerobsontrust.org.uk](http://www.annerobsontrust.org.uk)

AnneRobson Trust



ALL ARE  
WELCOME

JOIN US!  
EVERY WEEK

**ST. CECILIA'S CHURCH,**  
LITTLE HADHAM | SG11 2DY



**SUNDAY WORSHIP**  
9:15AM - 10:15AM  
EVERY THIRD SUNDAY OF THE MONTH

**MID-WEEK WORSHIP (BCP)**  
10:00AM - 10:30AM  
EVERY FOURTH THURSDAY OF THE MONTH

**ST. ANDREW'S CHURCH,**  
MUCH HADHAM | SG10 6DH



**SUNDAY WORSHIP**  
9:15AM - 10:15AM  
SECOND & FOURTH SUNDAYS OF THE MONTH

**SUNDAY EVENINGS**  
5:00PM - 5:30PM  
FIRST SUNDAYS OF THE MONTH | EVENING WORSHIP

**ST. MARY'S CHURCH,**  
ALBURY | SG11 2JQ



**SUNDAY WORSHIP**  
9:15AM - 10:15AM  
EVERY FIRST SUNDAY OF THE MONTH

**ST. THOMAS' CHURCH,**  
PERRY GREEN | SG10 6DU



**SUNDAY WORSHIP**  
9:15AM - 10:15AM  
EVERY FIFTH SUNDAY OF THE MONTH

*Sharing the Gospel in a New Way*

# DANIEL ROBINSON & SONS

Independent Family Funeral Directors & Monumental Masons

Est 1892

Always here when you need us...

- Arrangements in the comfort of your own home, if preferred
- Private Chapels of Rest
- Prepaid funeral planning services
- Traditional & contemporary funerals to suit your wishes



79/81 South Street  
BISHOP'S STORTFORD  
01279 655477

3 Bullfields  
SAWBRIDGEWORTH  
01279 722476

enquiries@drobinson.co.uk ~ www.drobinson.co.uk

## S.Southgate Carpentry Services

Free Estimates with no obligation

Kitchen Fitting & Tiling

Door Hanging

Skirtings / Architraves

Wood Flooring

General DIY & Maintenance

22 Years' Carpentry experience

07971 228735

s.southgatecarpentryservices

@hotmail.co.uk

**Oliver Minton**  
Sales & Lettings

With our Puckeridge Office, complemented by our other offices in Stanstead Abbots & Roydon, we are perfectly placed to attract buyers originating from areas such as Enfield & Cheshunt, who desire a more rural environment

Call 01920 822999  
www.oliverminton.com

## MASKALLS TREE SURGERY

Small family business

Big expertise  
in trees

Call George

M: 07982 601 570 | T: 01279 819 127

email: george@maskalls.co.uk

www.maskalls.co.uk



All types of tree care & hedge cutting undertaken.  
Call for a free estimate.



# TALKING BOWLS...OR SOMETHING

Much Hadham Bowling Club: Recreation Ground, Much Hadham SG10 6DL

BOWLS and CROQUET are BACK!

We opened a week or so earlier this year which was just as well as Sunday 26th April afternoon was our opening Friendly Bowls match away to Standon & Puckeridge and we're all bound to be a bit rusty and needing some practice.

**Saturday, 2nd May** is our annual OPEN DAY 10am to 4pm which gives an opportunity for all to try out these two sports. There's no charge, all equipment is provided ( just wear flat soled shoes such as trainers).

We hope you read this before the 2nd May but if not, worry not, we can accommodate you any Wednesday - (afternoon for Croquet or evening for Bowls).

## WHO DO THESE SPORTS APPEAL TO?

Just about everyone including all ages and sexes.

Couples:- as these are sports where both can compete on level terms.

Singles:- whether a keen competitor or leisurely pastime. There is always company on hand for socialising on Club nights and weekend friendly matches, meet new people.

Former sports people:- who still yearn the competitive edge and camaraderie -retired amateur footballers for example.

**SOCIAL** It matters not whether you play for fun or competitively, the social side is very much part of the Bowls/Croquet scene.

Apart from the many social activities we run, Wednesday evenings all year round is Club Night where members have a drink together (at Club prices of course), chat, play crib or whatever fancy takes. It is quite a unique scene. Interested?

Call Ken on 01279 842 637 - whilst the whole season is ahead of us!

*Jack*



## DO YOU NEED A GRAPHIC DESIGNER?

Hello! I'm a local graphic designer. I specialise in helping small businesses reach their full potential and attract new audiences.

Contact me on [anne@thehumbleline.com](mailto:anne@thehumbleline.com) to talk about your project.

Branding & Logo Design  
Brochures, Leaflets, Posters, Reports  
Packaging  
Adverts & Marketing  
Web Design & Social Media  
Copywriting & Typesetting



[www.thehumbleline.com](http://www.thehumbleline.com) | [anne@thehumbleline.com](mailto:anne@thehumbleline.com) | @thehumbleline

the humble line  
graphic design



# THE VETERINARY PHYSIOTHERAPIST

Prehab, Rehab & Performance

*Helping your animals move comfortably  
and confidently*

- Performance enhancement and maintenance
- Rehab & recovery after injury or surgery
- Pain management
- Arthritis and age-related stiffness
- Injury prevention and soundness

FREE phone consultation **07982 095 887**  
OR email [evie@thevetphys.com](mailto:evie@thevetphys.com)  
[www.theveterinaryphysiotherapist.com](http://www.theveterinaryphysiotherapist.com)



# VST PAINTING & DECORATING

Laurence Baldwin  
[laurence@vstdecorating.co.uk](mailto:laurence@vstdecorating.co.uk)  
07989 968 278

Your local decorator

Fully Insured

Find us on  
**Checkatrade.com**

## TPM

for your  
**Total Property Maintenance**  
Painting & Decorating  
&  
General home repairs

Call Tim Mearing  
for a free estimate



07970 599 204  
01279 771 288



E-mail: [timmearing@hotmail.com](mailto:timmearing@hotmail.com)

Highly respected local service based in Little Hadham.  
Established in the area for 20 years.  
Fully insured.

# THE HUNDRED PARISHES SOCIETY

KEN MCDONALD, SECRETARY

[www.hundredparishes.org.uk](http://www.hundredparishes.org.uk)



The Romans introduced wine making to the UK and vines were cultivated to some extent until World War I when land was needed for growing food.

Viticulture (the process of growing grapes) began to revive in the 1970s with warmer summers and the development of grape varieties suited to English conditions. Today, we have several successful vineyards in The Hundred Parishes.

One of the first was Chilford Hall in Linton parish. It was run by the Alper family for 50 years before changing hands in 2024. The new owners continue to manage the 20-acre vineyard alongside their Grillo Outdoor Kitchen business.

In Great Bardfield, Great Lodge produces its own wines from six different grape varieties. The vineyard is open to visitors midweek from May to September and there is also a wedding venue on site. Website: [www.greatlodge.co.uk/vineyard/](http://www.greatlodge.co.uk/vineyard/)

In Farnham, Hazel End Farm has been growing grapes for over thirty years. Their sparkling white wine is sold as Three Squirrels. This celebrates the fact that the Gosling family who own the land once had a bank in Fleet Street where a sign above the door read "Ye Three Squirrels". Website: [www.corylet.com/](http://www.corylet.com/)

In Saffron Walden, the first vines were planted at Saffron Grange in 2008. The family business is now well established, producing white sparkling wines and offering vineyard tours for small groups from mid-April. Website: [www.saffrongrange.com/](http://www.saffrongrange.com/)

In Stansted Mountfitchet, a new vineyard was planted in 2021 on a south-facing

slope. The first grapes were harvested in 2023 and wine from the Gunyah Vineyard is now on sale. Website: [www.thegunyahvineyard.com/](http://www.thegunyahvineyard.com/). This vineyard can be seen across the valley from Hundred Parishes walk number 137.

Another vineyard has appeared in recent years in Henham – and there may be others. Please email [hundredparishes@btinternet.com](mailto:hundredparishes@btinternet.com) if you find any more.



*Gunyah vineyard, Stansted Mountfitchet in September*



*Grapes in Henham vineyard in August*



*Hazel End vineyard, Farnham in June*



*The Vine pub in Great Bardfield*



*Vine Cottage, Much Hadham*

**Editor's Note:** Of course as many of you will know we have our very own Vineyard here in Little Hadham at Four Acres Estate: [www.fouracresestate.co.uk](http://www.fouracresestate.co.uk). Four Acres Estate is a family owned and run vineyard, orchard and winery producing fabulous English sparkling wine and delicious country cider pressed from traditional apple varieties, all grown right here in Little Hadham.



# THE GARDENS OF EASTON LODGE

JILL GOLDSMITH

[www.eastonlodge.co.uk](http://www.eastonlodge.co.uk)

Spring is my favourite season and at the Gardens extends into May, with bluebells and camassia and waving cow parsley under the trees, while the willowy white bracts waft on the handkerchief tree in the Glade at the beginning of the month and in a good year, the Laburnum walk drips gold. By the end of the month the foxgloves are crowding out the herbs in the kitchen garden and the Allium Christophii are spectacular (if there's enough rain). Towards the end of the month, we are treated to the lovely unusual pink pea shaped flowers of the false acacia and there are also flowers atop one of the tallest of the trees in the Glade, the Indian Horse Chestnut.



The Gardens are open every Thursday in May, from 11am to 3pm, last entry 2pm. The Trust's volunteers provide refreshments in Daisy's Kiosk and are on hand to answer visitors' gardening questions. And the history and information room is open for visitors to browse the pictures and stories telling the history

of the Gardens, gardeners and surrounding area.

**Sunday 10 May is Nature Day at the Gardens,** with a range of fun nature activities, including pond dipping and owl pellet dissection. Essex Bat Group will be with us too.

The Gardens are open from 11am to 5pm, last entry 4pm, with refreshments available. Woodwind of Stortford will be playing their eclectic blend of light music. For more information go to our website [www.eastonlodge.co.uk](http://www.eastonlodge.co.uk)



**Locally based lawn care services and bespoke treatment programmes**

## Supalawns

Professional Lawn Care

**Specialists in:**

<ul style="list-style-type: none"> <li>● Aeration</li> <li>● Scarification</li> <li>● Top Dressing</li> </ul>	<ul style="list-style-type: none"> <li>● Weed &amp; Moss Control</li> <li>● Fertiliser Application</li> <li>● Disease Diagnosis</li> </ul>
---	--

07725 415 826

john@supalawns.com | supalawns.com

**Bishop's Stortford Chimney Services**



Office: 01279 771462  
Mobile: 07990 770883

- Chimney sweeping
- Stove installation
- Maintenance & repairs
- Pots & cowls fitted
- Certificates issued
- Free estimates

bishopstortfordchimneyservices.co.uk  
richard.mardell@yahoo.co.uk






M Perkins  
Decorators

Interior & Exterior Decorating

Established 25yrs+  
Quality Workmanship  
References Available  
Competitive Prices

Tel: 01279-771192  
Mobile: 07932-928148

Email: [contact@imperkinsdecorators.com](mailto:contact@imperkinsdecorators.com)  
Website: [www.imperkinsdecorators.com](http://www.imperkinsdecorators.com)

Our March meeting was very enjoyable and interesting. Stephen Ruff came along to give a talk on the Buntingford Railway and as usual he brought along old photographs of the village and local people - some of whom worked on the railway.

The next meeting for the Society will be on **28th May**. It is hoped to arrange a visit to de Havilland's Museum in Hatfield. Details of this will be circulated later.

If anyone would like more information on the Society or Meetings please do get in touch with me [katieh69@btinternet.com](mailto:katieh69@btinternet.com)

## HADHAM CROSS CONGREGATIONAL CHURCH

KATHY HAMILTON

### PREACHERS FOR SERVICES AT 11am

3rd May	Kathy Hamilton	Hadham Cross
10th May	Kathy Hamilton	Hadham Cross
17th May	Mike Hillyer	Oakwood Chapel Harlow
24th May	John Fosker	Therfield Congregational Church
31st May	Andrew Mayo	Spicer Street, St. Albans

All are welcome to our Sunday Services at 11am

Our next **COFFEE MORNING** will be on **Wednesday 13th May** 10am- 12 noon. Please do come and join us for coffee/tea cake and a chat.

**PLEASE NOTE - THERE WILL BE NO AFTERNOON TEA MEETING THIS MONTH.**

**Church Deacons: Brenda Coleshill 01279 842 800 | Kathy Hamilton 01279 843 756**

**JORDAN** Providing expert oil boiler services for over 30 years 

Oil Burner Services Ltd.

Family Business Established 1968

**Oil Boiler Servicing, Repairs, Commissioning and Oil Lines Specialist**

Recommended by most manufactures, specifically Grant. We carry all parts for all oil boilers for immediate same-day repairs. Fully skilled engineers, regularly trained to meet current manufacturers' requirements.

Visit our website for more information on us and related trades, plus our recommendations for plumbing, oil tank installations and chimney sweeping.

[www.jordanoil.co.uk](http://www.jordanoil.co.uk)  
**Office:** 01438 355 583  
**Robert Jordan:** 07831 364 607  
[jordanoilburner@gmail.com](mailto:jordanoilburner@gmail.com)

**STEPHEN CHAPMAN**  
 Boiler Man  
 OFTEC REGISTERED

---

Servicing, Repairing & Commissioning Oil Fire Boilers  
 Contact Julie in the office on – 07519 721643 or 01438 233612  
 Email [steveoilboilers@gmail.com](mailto:steveoilboilers@gmail.com)  
[www.stephen-chapman.co.uk](http://www.stephen-chapman.co.uk)

25-year guarantee to all new pitched roofs and a 15-year guarantee on all new flat roofs  
 Free no obligation quotations

- Flat Roofing Repairs, Cement Work, Lead Work, Chimneys
- Facias, Gutters & Soffits, VELUX installation, Emergency call out service
- Pitch Roofs, Tiling, Slatting

Tel: 07852 576 194 Email: [sales@dsparwellroofing.co.uk](mailto:sales@dsparwellroofing.co.uk)

Stansted's Best Kept Secret

**Gallery @ MOUNTFITCHET**

Paintings by Anne McCormack RI SWA

Viewing details & opening times visit: [annemccormack.com](http://annemccormack.com)

**REBOOT** IT SOLUTIONS 

**Computer HELP**  
 In your Own Home

 Apple |  Android |  Microsoft

**Contact Tracy**  
**07521 977 997**  
[www.rebootitsolutions.co.uk](http://www.rebootitsolutions.co.uk)

# FOOD FOR THOUGHT

BRENDA KAIN

## CANTERBURY TART

I'd like a £1 for every one of these tarts I have cooked (and sold) over the years. Always a favourite and wonderful to freeze. The original recipe had many processes and in the interests of an easier life I've tried to reduce them.

### SERVES 6

1 pack ready made shortcrust pastry

3 eggs beaten

225g caster sugar

75g melted butter

Grated rind and juice of 1 lemon

3 medium cooking apples  
peeled and grated

2 medium eating apples, peeled,  
cored and thinly sliced

25g Demerara sugar

### METHOD

1. Preheat oven to 200C/400F/gas 6
2. Line a 20cm flan tin with Nancy's lining paste (mentioned in the February edition) and then the pastry
3. Unless using an Aga, heat a heavy baking tray (This will save having to blind bake the pastry case)
4. Combine the eggs, caster sugar, melted butter, lemon juice and rind and finally the grated cooking apples



5. Pour into the pastry case
6. Arrange the dessert apple slices around the edge, neatly overlapping
7. Sprinkle with Demerara sugar
8. Slide the tin onto the heated baking tray and cook for approx 40 mins

Aga - slide the tin onto the floor of the roasting oven (2 door) and cook for approx 30 mins.

For all methods of cooking keep an eye on the browning of the apples. Cover with a piece of foil if they brown too quickly but make sure you cook the tart for the allotted time.

When it's cool it should lift out of the tin easily courtesy of the lining paste!!

**Sierra HomeCare**  
Personal • Caring • Responsive

*There's no place like home...*

Companionship  
Home Help  
Personal Care

*...to receive care and support to live your life, your way*

**Tel: 01279 501678**  
[www.sierrahomecare.co.uk](http://www.sierrahomecare.co.uk)  
CQC Registered

MUCH HADHAM  
**FORGE MUSEUM**  
a hive of history

Welcome...

**The Tudor Storyteller & Family Challenge Trail**

**May 30th from 11am**  
No need to book, just turn up!

Free event at Much Hadham Forge Museum SG10 6BS  
#HadhamMurals450

## Luxury Toilet Hire (UK) Ltd



Whether you are arranging a wedding, private party or corporate event, let Luxury Toilet Hire (UK) Ltd provide you with the perfect toilet facility to make your occasion a memorable success.

**Tel: 01279 504638 or 01371 873003**

**Web: [www.luxurytoilethire.co.uk](http://www.luxurytoilethire.co.uk)**

**Email: [info@luxurytoilethire.co.uk](mailto:info@luxurytoilethire.co.uk)**

**We also hire out mobile fridge and freezer trailers.**

## LTH Waste Removal

Effluent & Liquid Waste Removal



Your local service provider for all effluent and liquid waste removal including:

- Cesspits
- Septic tanks
- Klargesters and Bio disks

LTH provides a personal, professional and efficient service at a very competitive rate.

For a free quotation, and site visit if required, please call us on:

**01279 504638**

**01371 873003**

or email:

[info@luxurytoilethire.co.uk](mailto:info@luxurytoilethire.co.uk)

# PARISH SERVICES MAY 2026

BENEFICE OF: LITTLE HADHAM | MUCH HADHAM | ALBURY

Date	Day	Church	Service / Event	Time
03-May	Sunday	St Mary's, Albury	Easter 5	9.15am
03-May	Sunday	St Andrew's, Much Hadham	Evening Worship	5pm
10-May	Sunday	St Andrew's, Much Hadham	Easter 6	9.15am
10-May	Sunday	St Andrew's, Much Hadham	Rogation Walk	6pm
14-May	Thursday	St Andrew's, Much Hadham	Ascension Day	7.30pm
<b>17-May</b>	<b>Sunday</b>	<b>St Cecilia's, Little Hadham</b>	<b>Easter 7</b>	<b>9.15am</b>
24-May	Sunday	St Andrew's, Much Hadham	Pentecost	9.15am
<b>28-May</b>	<b>Thursday</b>	<b>St Cecilia's, Little Hadham</b>	<b>Midweek BCP</b>	<b>10am</b>
31-May	Sunday	St Thomas', Perry Green	Trinity Sunday	9.15am

## DONATING TO ST. CECILIA'S

As well as the Parish Giving Scheme, cheques and cash, we have now caught up with modern technology and have Contactless Giving in the Church. You can also donate via our QR code. — Thank you.



ST CECILIA'S CHURCH  
LITTLE HADHAM

ALL ARE WELCOME TO JOIN OUR SERVICES